

eSTAT30sb Electronic thermostat with external knob input

Replaces mechanical Thermostats with separate selector and control. Optional timer and 2nd selector input for Cook & Hold applications.

PRODUCT DATA

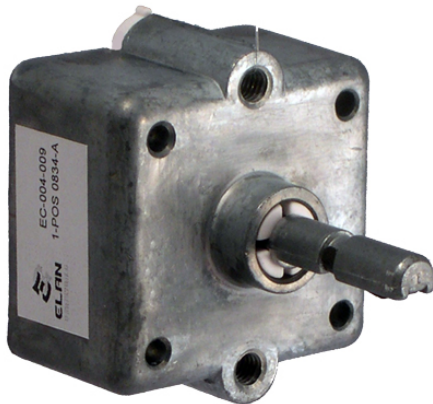


Features

- Electronic performance, mechanical feel
- Control temp from 90^o to 550^oF; multiple ranges supported with a single SKU!
- Accurate and reliable;
- Replaces bulb & cap thermostats
- Attach a 2nd knob to replace Cook **AND** Hold mechanical thermostats.
- (2) relay outputs, configurable
- RTD temp probe input
- UL recognized
- Direct AC connection, 110/208/240V, 50/60 Hz
- Temperature selectors available from Elan or customer supplied.
- Stores dozens of operating models in single SKU

Applications

- Griddles
- Warming ovens
- Banquet Carts
- Cook & Hold Ovens
- Rethermalization Cabinets
- Deli Cabinets



General

The eSTAT30SB replaces mechanical thermostats with a high-accuracy, reliable electronic control. And the eSTAT30SB retains a knob input: Elan's selector mounting matches industry standard (2--#8 screws on 1.312 center) or use your own 10K potentiometer. And add a 2nd selector and the eSTAT30SBD can replace Cook **and** Hold thermostats.

The eSTAT30SB stores dozens of operating models (tailored for the OEM) accessed via DIP-switch. This aids OEM in standardizing product offering, replacing multiple inventory items with a single SKU, and reducing time to market for new products. The eSTAT30SB also eliminates a long calibration process during manufacturing common to mechanical thermostats.

Performance can be customized to suit the OEM. Contact Elan Industries at 630-679-2000 or www.elanindustries.com.

SPECIFICATIONS

Temperature Control

Temp Range: From 90°F to 550°F. Customer defines ranges desired, all are supplied on 1 SKU. COOK and HOLD can be different ranges.

Temp Dead band: Definable. +/-1° to 5°F typical

Hardware Temp Offset: +/-20°F typical

Software Temp Offset: Per customer table if defined

Initial Preheat Overshoot: Definable. 25°F typical. To heat

soak cabinet for fast Preheat. Can be disabled

Detent Location: at OFF (Top Dead Center)

Input Power

110/208/240VAC, 50/60Hz

Ambient Temperature

OPERATING AMBIENT: 32°F to 185°F (0° to 85°C)

SHIPPING/STORAGE: -40°F to 185°F (-40° to 85°C)

Temperature Probe

1 KΩ RTD (Avail from Elan. Not included)

Output Relay

(2) relays (rated to 17A @ 85°C per UL testing). Configured to operate independent or connected.

Temp Input shaft (Elan Selector)

1/4" diameter, see figure below. 'OFF' @ TDC. 2nd Selector can be attached for 2nd temp setting on COOK & HOLD applications.

Connections

AC & Relays: 1/4" Fast-on spade terminals

RTD: 2pos connector

Selectors: 3pos connector(s)

External Beeper: 2pin connector for 12VDC beeper by others

Model Select

4 or 8pos DIP configured to suit OEM. Can support up to 256 models each with defined operating characteristics (range, dead band, dial, etc.)

Atmosphere

Non-condensing, non-corrosive, non-explosive. Board is not conformal coated.

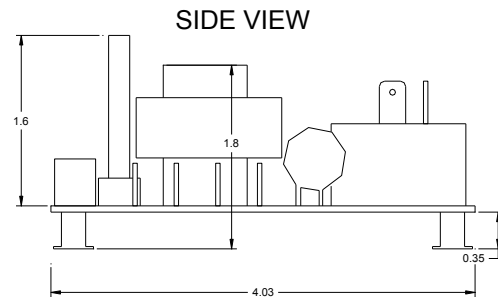
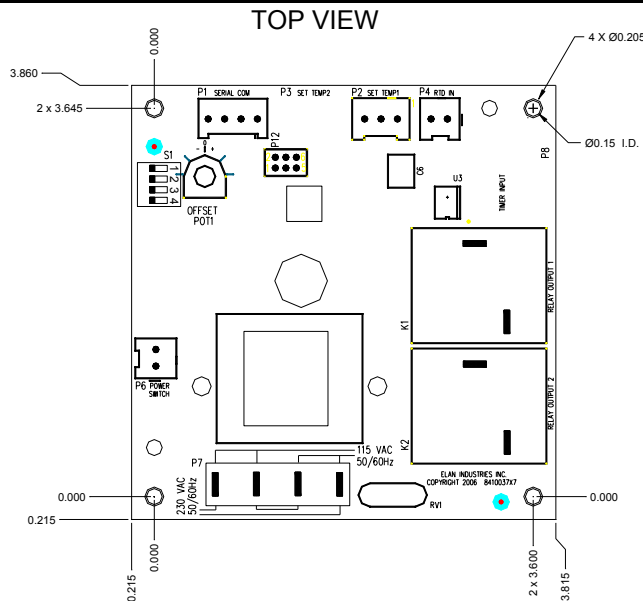
Agency

UL File E252171.

Custom Performance

To suit OEM.

PRODUCT DRAWING



ADDITIONAL MODELS

PRINT SHOWS BASIC MODEL. FULLY OPTIONED MODEL INCLUDES 2ND SELECTOR INPUT, 8POS MODEL SELECT DIP-SWITCH (NOT 4), MECHANICAL TIMER INPUT.

External Selector

